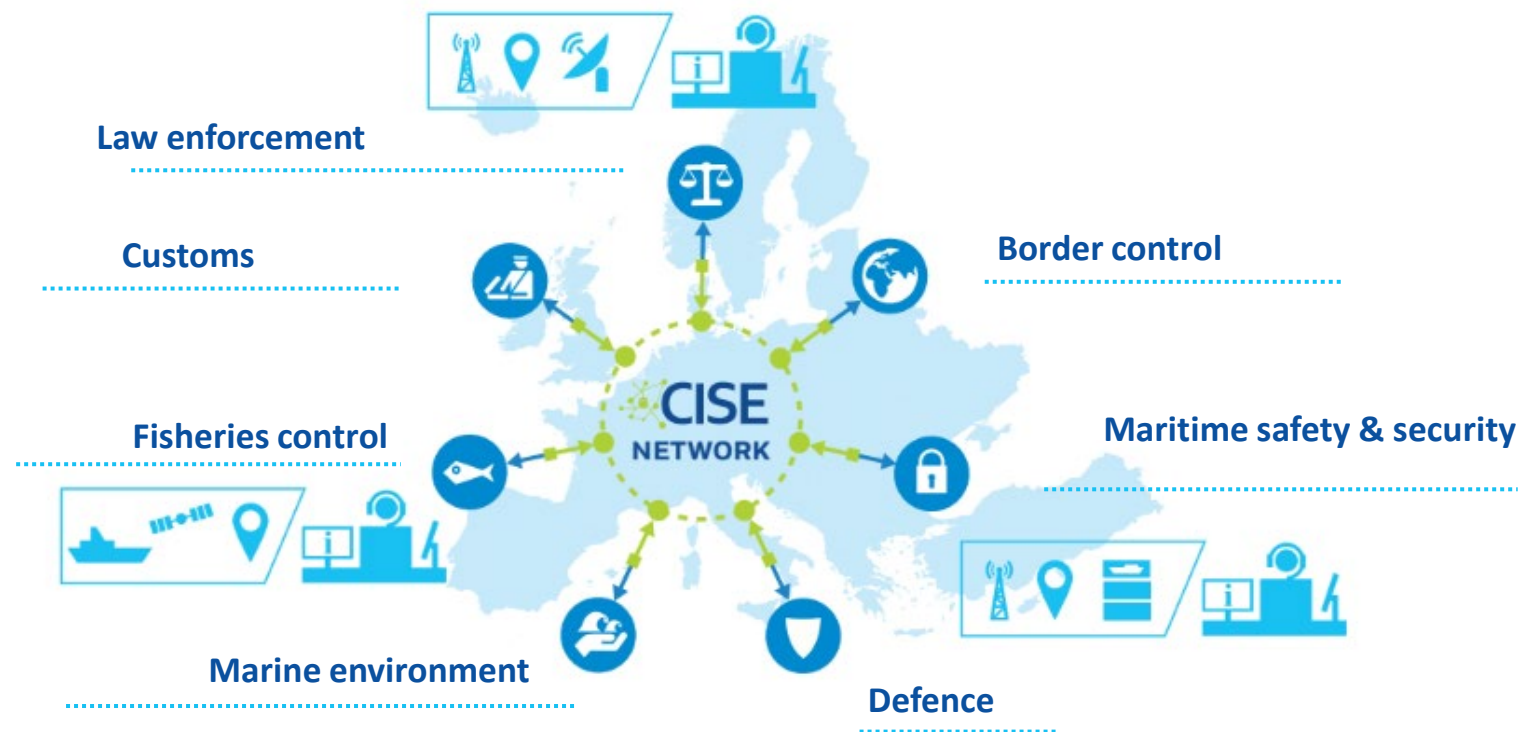


CISE Generic Adaptor

CISE Alert VIP Day

Rome / 12 September 2024





CISE makes the existing systems interoperable to enable maritime authorities to exchange information using their own legacy systems.



CISE makes the existing systems **interoperable** to enable maritime authorities to exchange information using their own legacy systems.



CISE makes the existing systems **interoperable** to enable maritime authorities to exchange information using **their own legacy systems**.



CISE makes the existing systems **interoperable** to enable maritime authorities to exchange information using **their own legacy systems**.

CISE allows for seamless information exchange across borders and different sectors



CISE makes the existing systems **interoperable** to enable maritime authorities to exchange information using **their own legacy systems**.

CISE allows for **seamless** information exchange across borders and different sectors



CISE makes the existing systems **interoperable** to enable maritime authorities to exchange information using **their own legacy systems**.

CISE allows for **seamless** information exchange **across borders and different sectors**

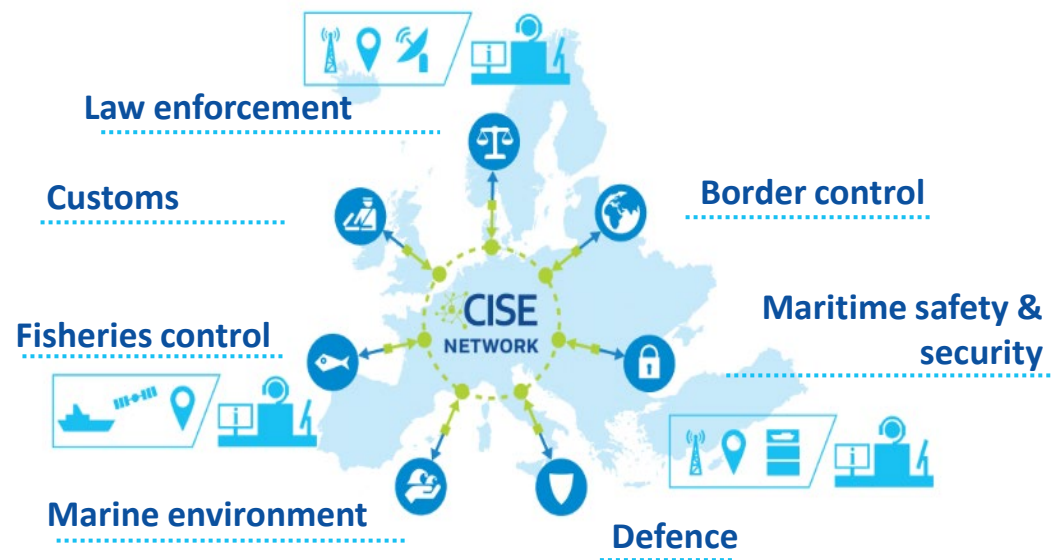
CISE allows for **seamless** information exchange across borders and different sectors



KEY PRINCIPLES

- 01** Voluntary participation
- 02** Connecting existing systems
- 03** Connecting authorities from 7 sectors
- 04** Decentralized infrastructure
- 05** Based on standard data model
- 06** Easy control of access rights by the data owner

CISE allows for **seamless** information exchange across borders and different sectors



KEY PRINCIPLES



- 01** Voluntary participation
- 02** Connecting existing systems
- 03** Connecting authorities from 7 sectors
- 04** Decentralized infrastructure
- 05** Based on standard data model
- 06** Easy control of access rights by the data owner

CISE allows for **seamless** information exchange across borders and different sectors



KEY PRINCIPLES

- 01** Voluntary participation
- 02** Connecting existing systems
- 03** Connecting authorities from 7 sectors
- 04** Decentralized infrastructure
- 05** Based on standard data model
- 06** Easy control of access rights by the data owner

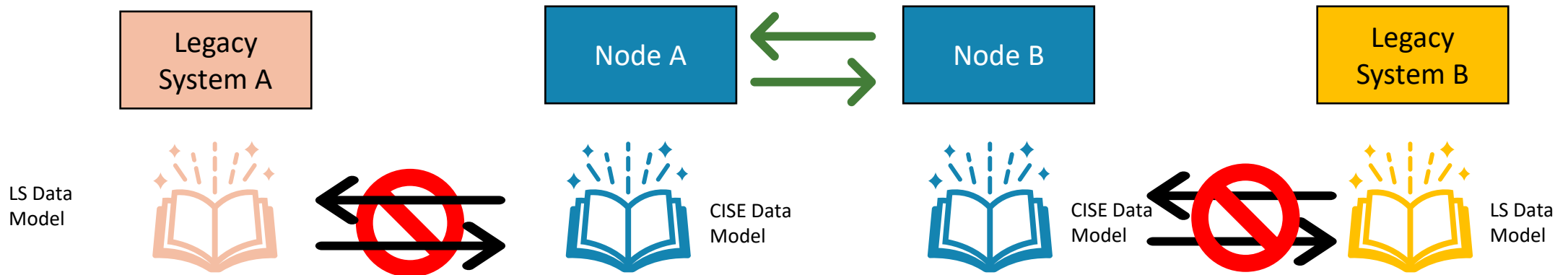
CISE allows for **seamless** information exchange across borders and different sectors



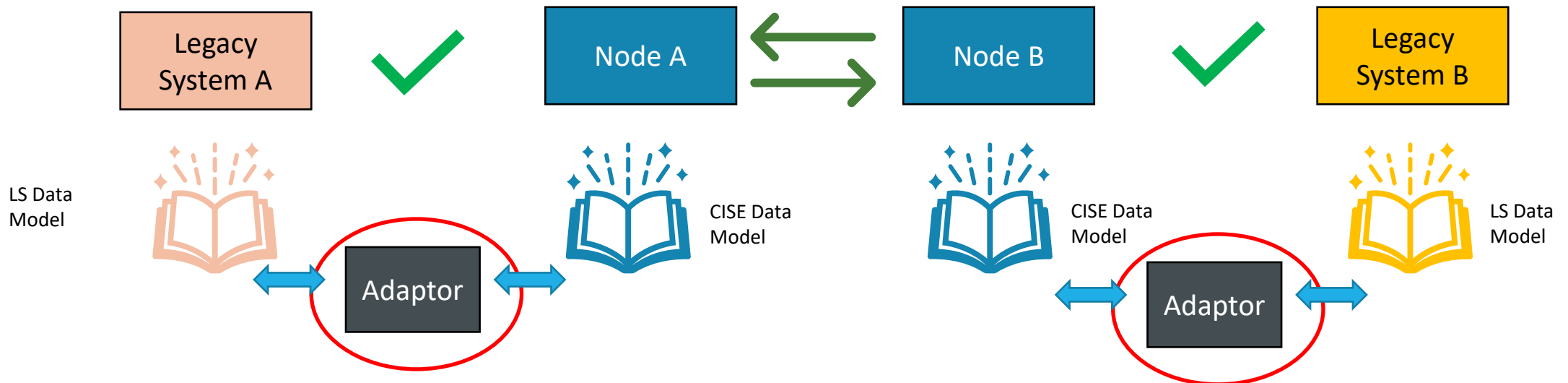
KEY PRINCIPLES



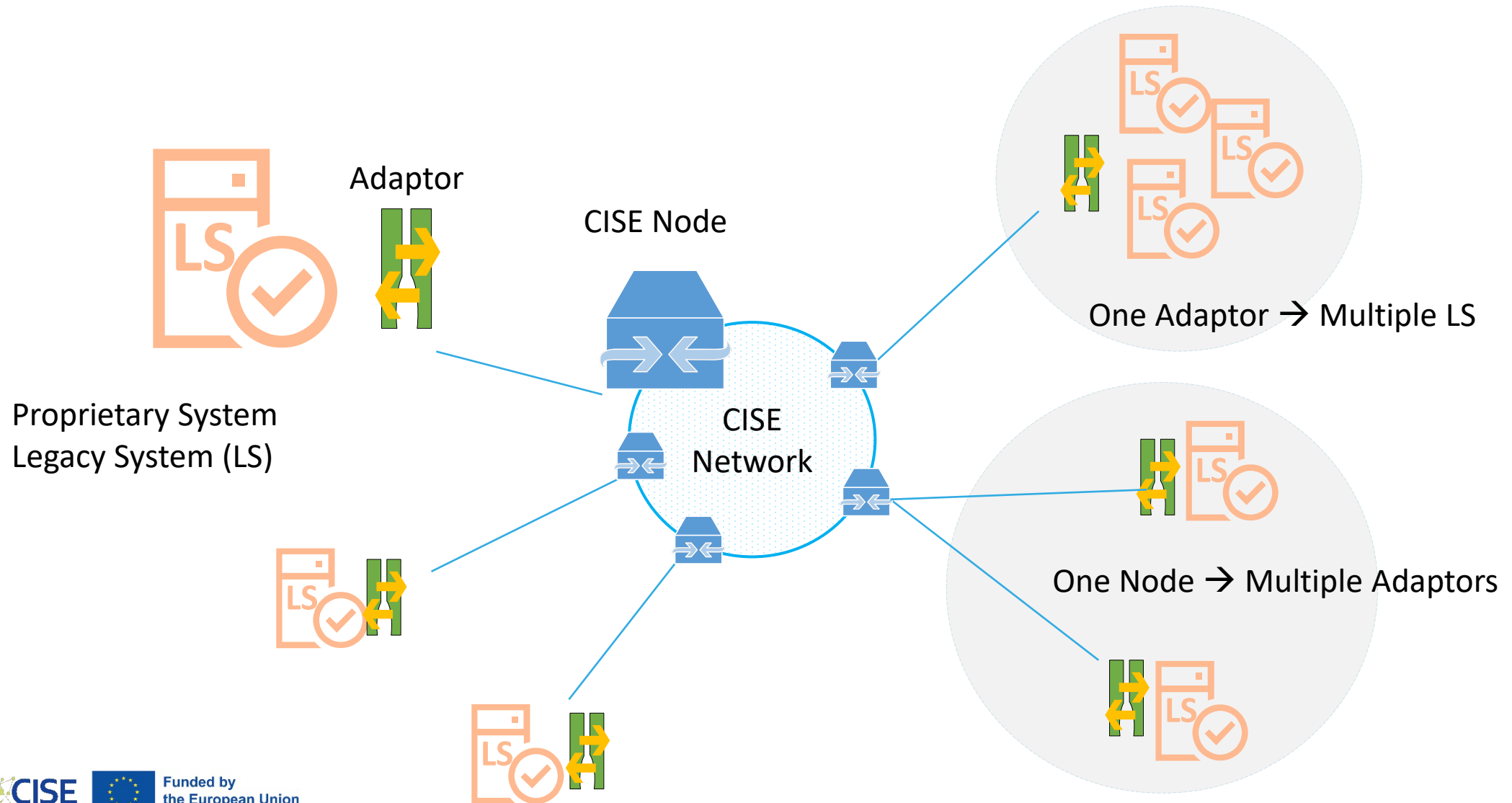
CISE Stakeholders need to develop an *Adaptor* to connect their existing *Legacy System(s)* to the *CISE Node*.



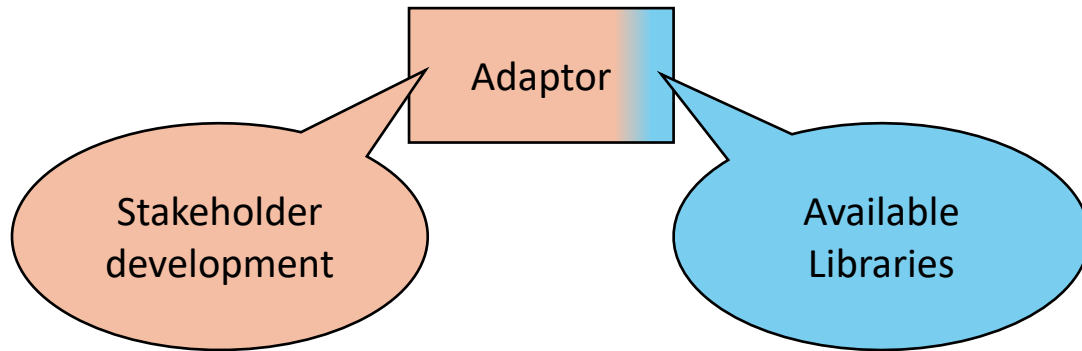
CISE Stakeholders need to develop an *Adaptor* to connect their existing *Legacy System(s)* to the *CISE Node*.



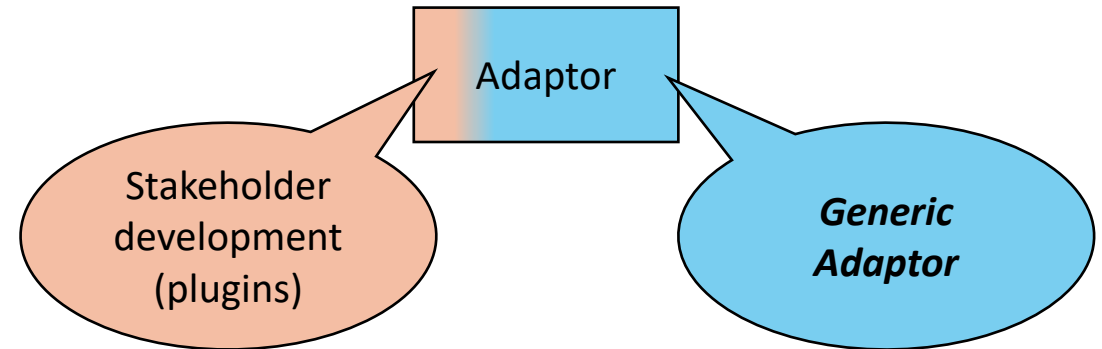
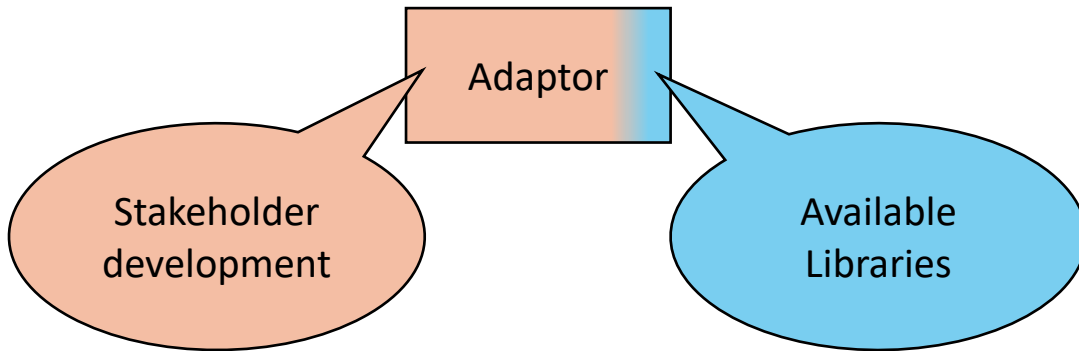
Modes of exploiting adaptors



Adaptor traditional development

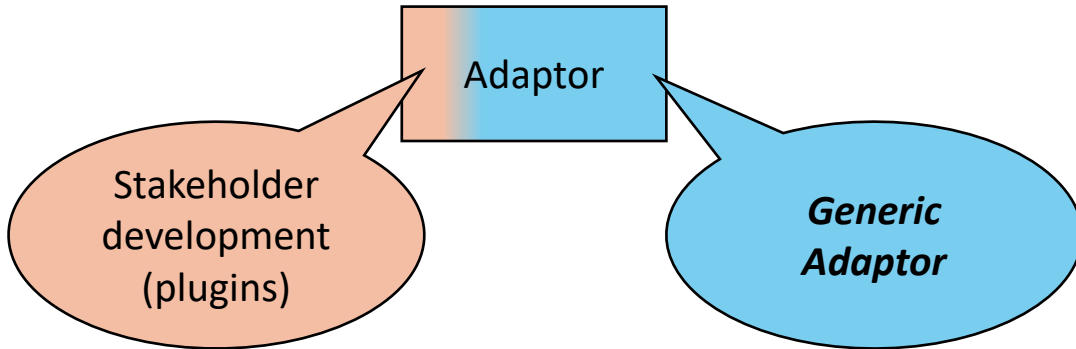


With the generic adaptor



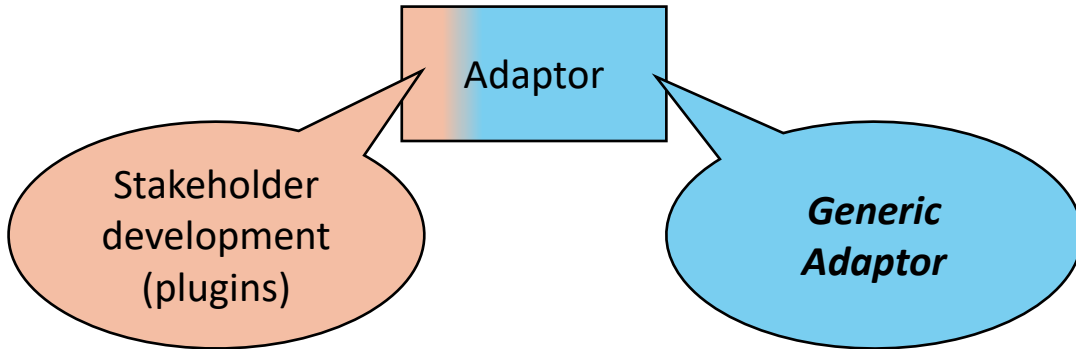
Cut development effort (estimated 60-80%)

With the generic adaptor



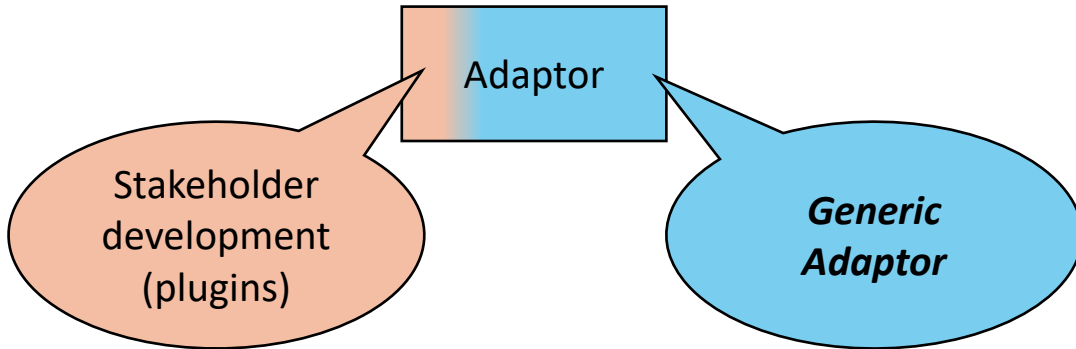
- Allow Legacy System communication / language translation using tailored *plugins*

With the generic adaptor



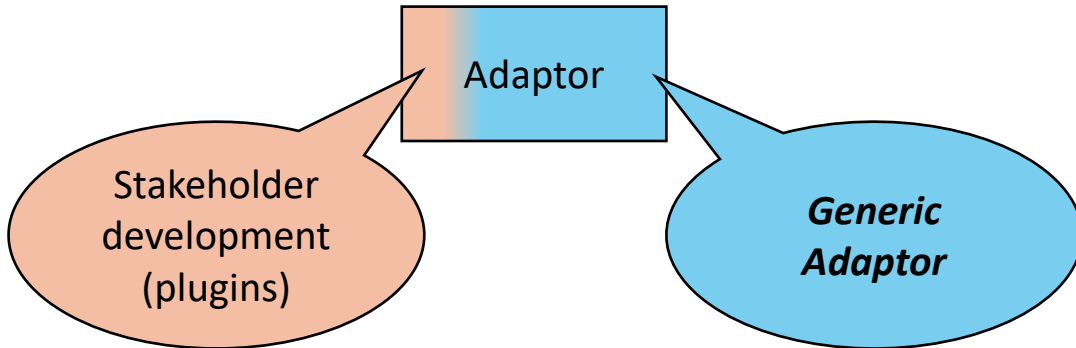
- Allow Legacy System communication / language translation using tailored *plugins*
- Focus on making your Legacy System talk to CISE

With the generic adaptor



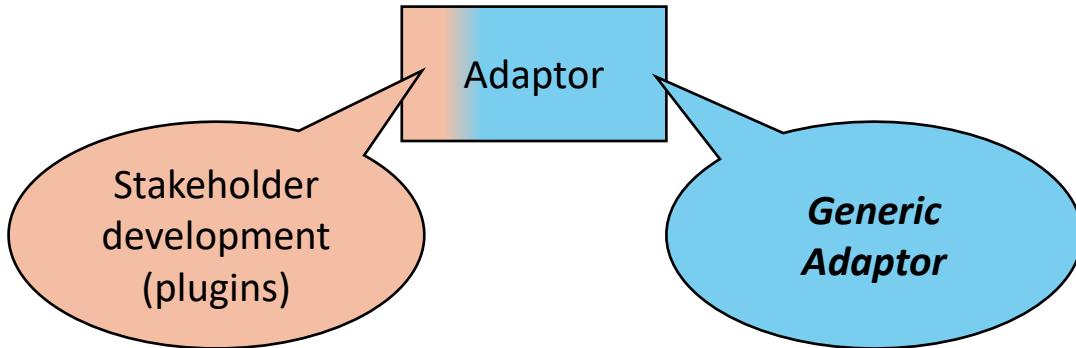
- Allow Legacy System communication / language translation using tailored *plugins*
- Focus on making your Legacy System talk to CISE
- Re-use sample plugins created by JRC / EMSA/ Stakeholders

With the generic adaptor



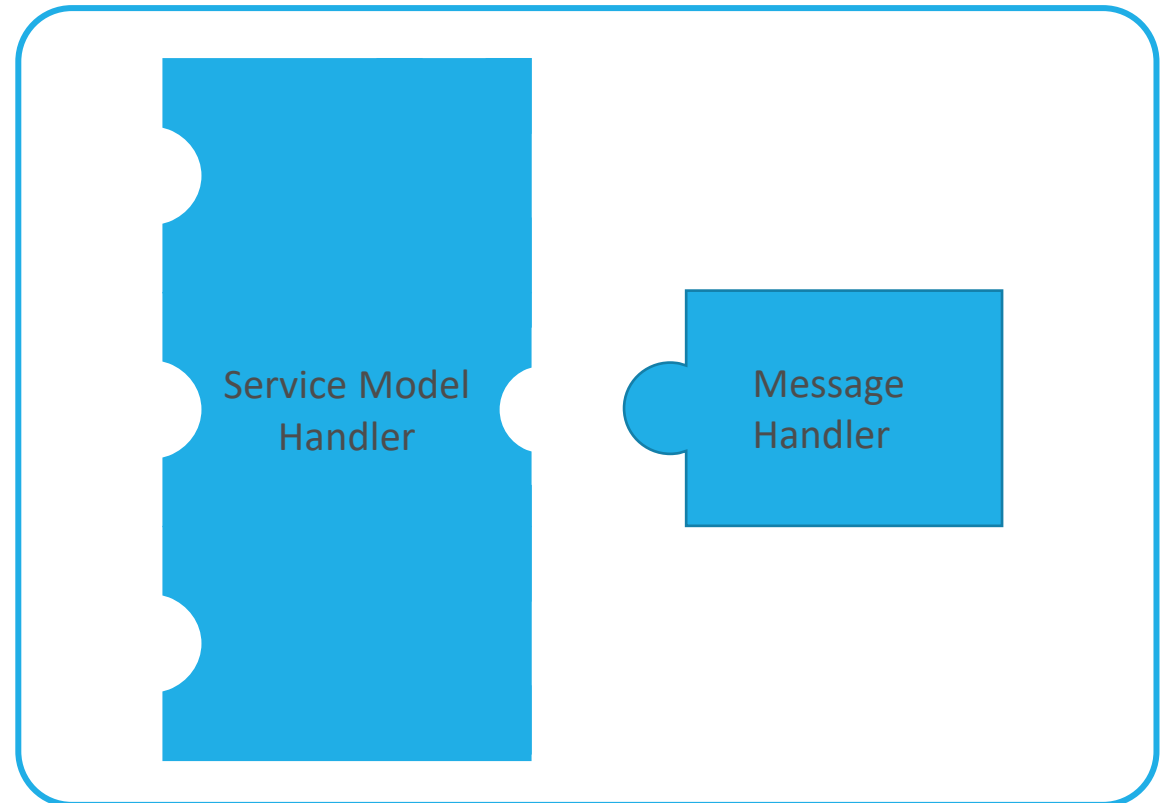
- Allow Legacy System communication / language translation using tailored *plugins*
- Focus on making your Legacy System talk to CISE
- Re-use sample plugins created by JRC / Stakeholders
- Out-of-the-box handling of CISE Node communication and security updates

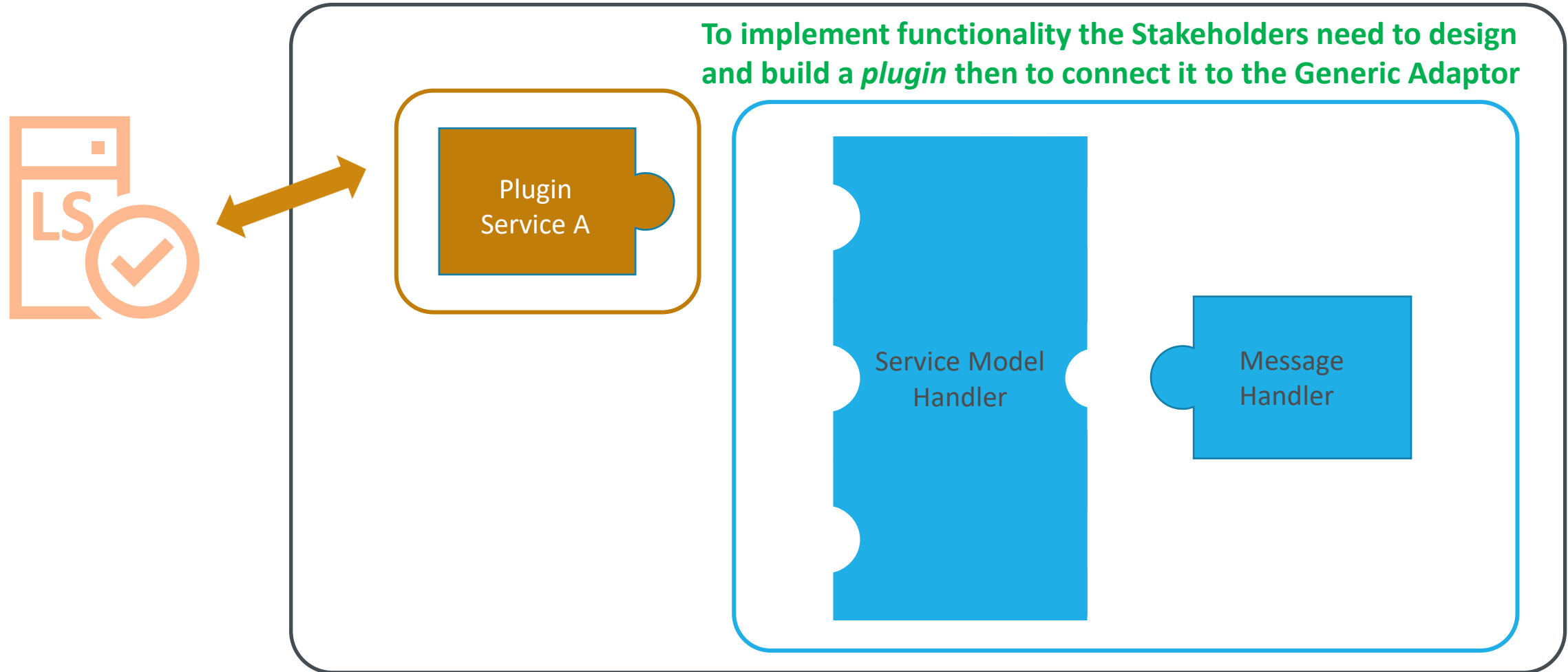
With the generic adaptor



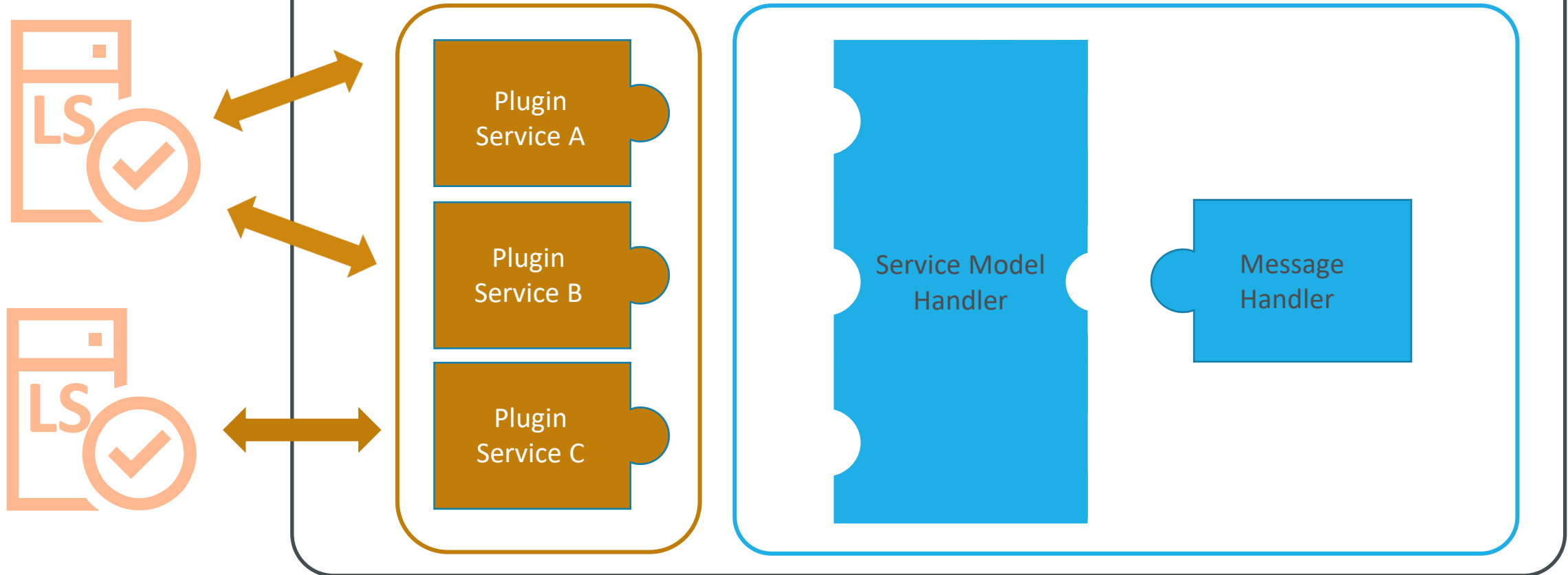
- Allow Legacy System communication / language translation using tailored *plugins*
- Focus on making your Legacy System talk to CISE
- Re-use sample plugins created by JRC / Stakeholders
- Out-of-the-box handling of CISE Node communication and security updates
- Minimise the learning curve of plugin development through the use of well-known technologies (Java, Quarkus, etc.)

Standalone application (provided to the stakeholder)





With more plugins, a single Generic Adaptor can provide additional services and/or connect to multiple LS



•Supports the following CISE information services:

- Push provider / consumer (known-unknown)
- Subscribe provider / consumer (known-unknown)
- Pull provider / consumer (known-unknown)

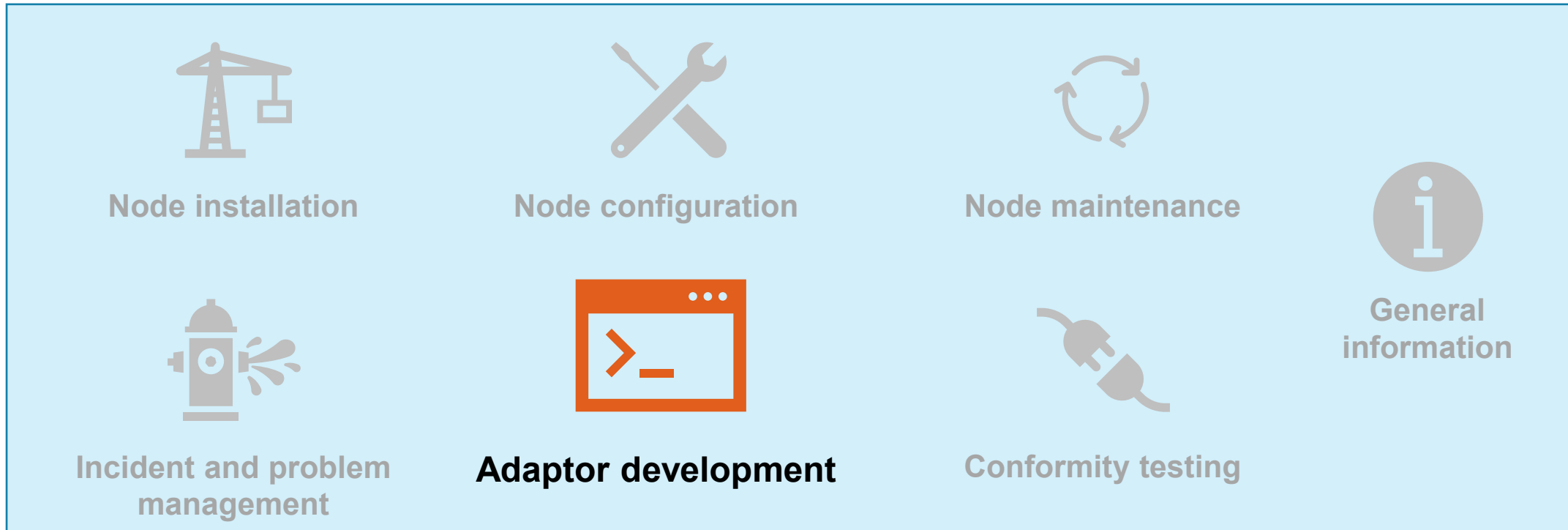
The CISE Stakeholders are invited to submit to



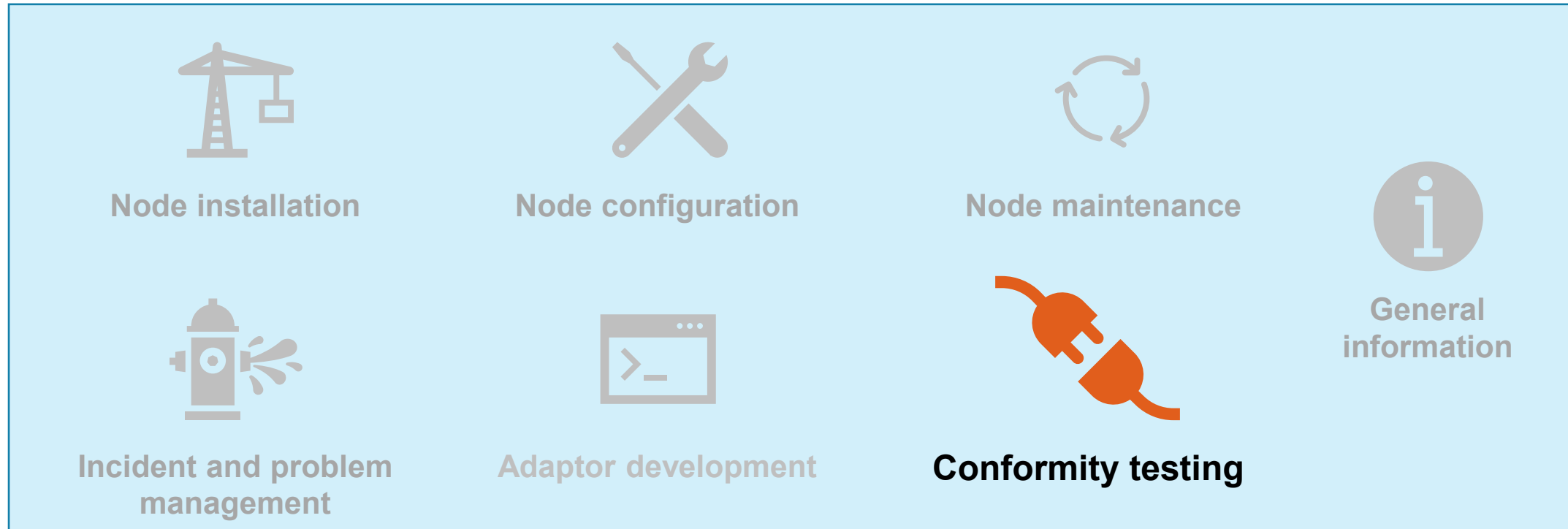
mss@emsa.europa.eu

any request for

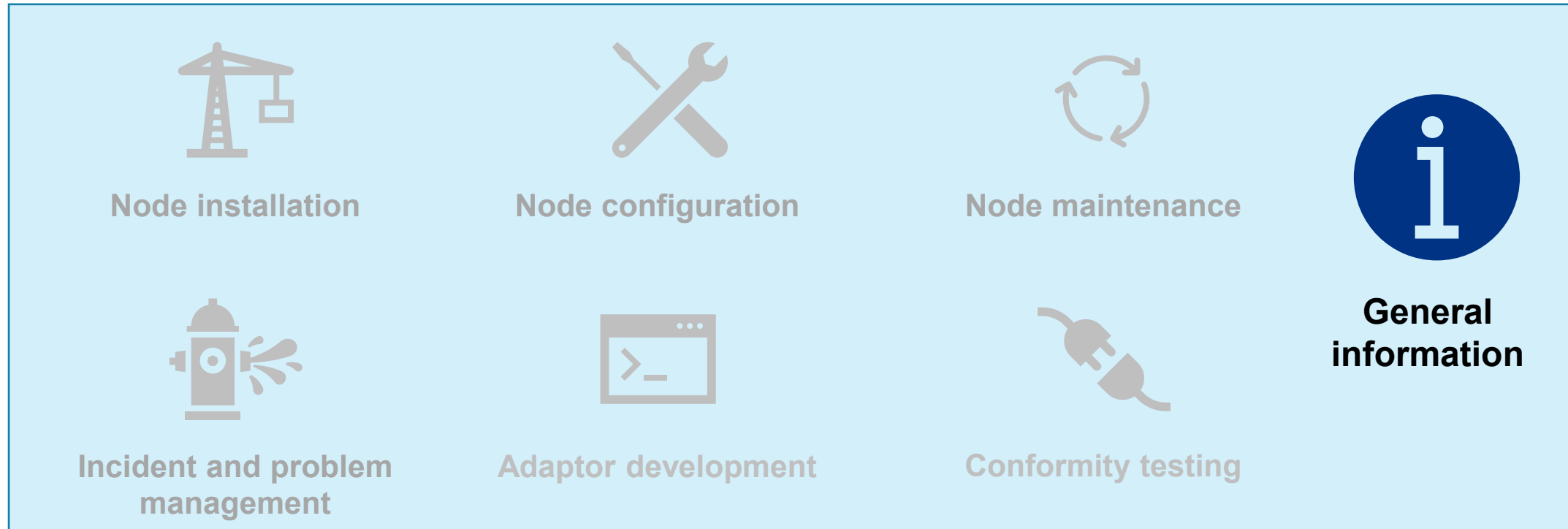
supporting the **development/Configuration**



validation



Information



The **Stakeholder** is **accountable** for the development/deployment of adaptors.
CISE support team can be **consulted** and **informed**.

Activity	Stakeholder (SH)	CISE support team
Adaptors/Simulators	<ul style="list-style-type: none">• Develop the Information Sharing Plan• Implement the Adaptor• Deploy the adaptor	<ul style="list-style-type: none">• Support to connection/configuration/development of existing or new adaptors/simulators



Being the adaptor an essential component within the CISE infrastructure, for which continuous enhancements are foreseen to be developed during time, the Stakeholders are strongly suggested to put in place contracts for evolutionary maintenance and request their contractors for a 24/7 or 8/5 support (depending on the operational needs)





Thank you!

Follow our activities on social media:



emsa.europa.eu/newsroom/connect

